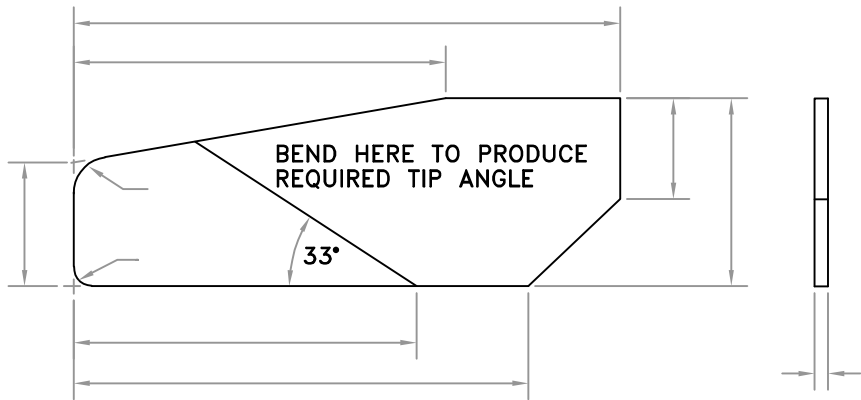
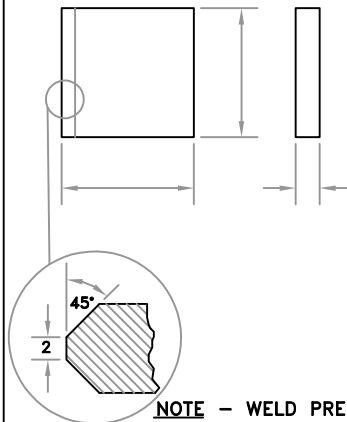


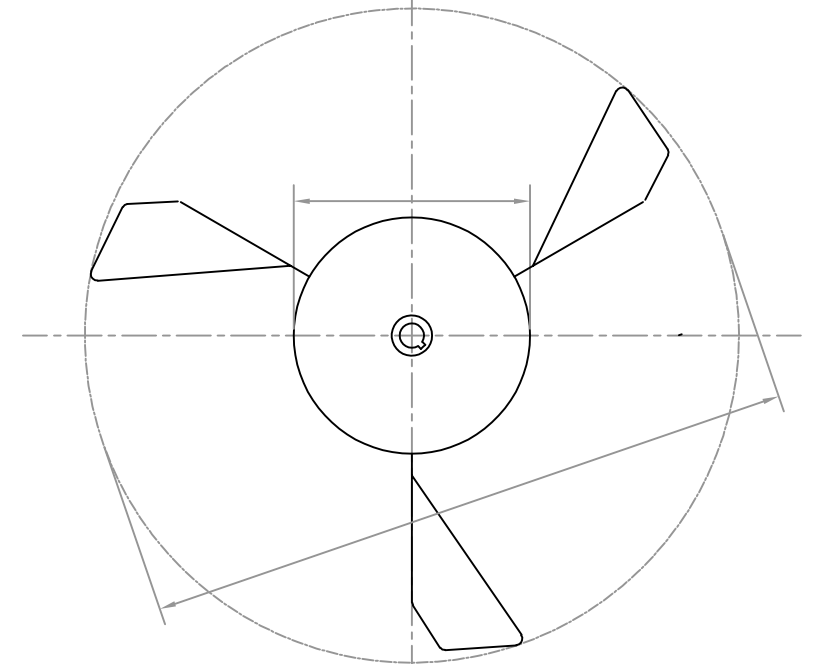
**FLAT BLADE PROFILE**  
3 BLADES PER IMPELLER



**EAR DETAIL**  
3 EARS PER IMPELLER

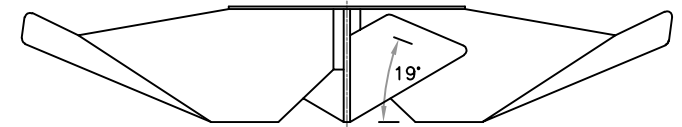


**COMPLETE IMPELLER**



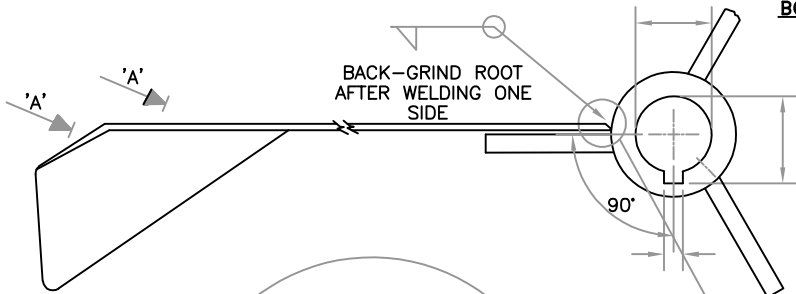
BLADES MUST BE EQUISPACED  
AND SAME DISTANCE FROM  
TURBINE  $\phi$

DISK FLATNESS PROFILE TO  
6mm IN A METRE - AFTER WELDING

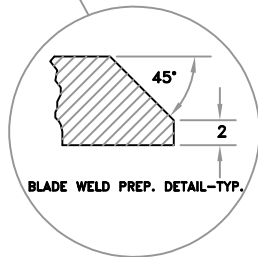
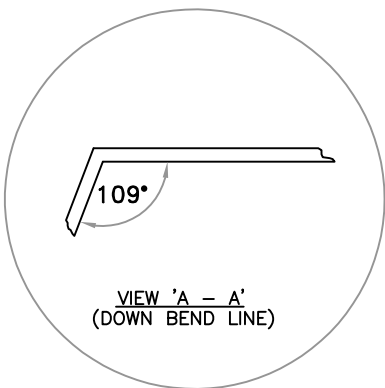


**IMPORTANT**  
TIP ANGLE = 19° ±1'

**BOSS, EARS, BLADES and TOP PLATE CONFIGURATION**  
(FULLY WELDED ASSEMBLY)

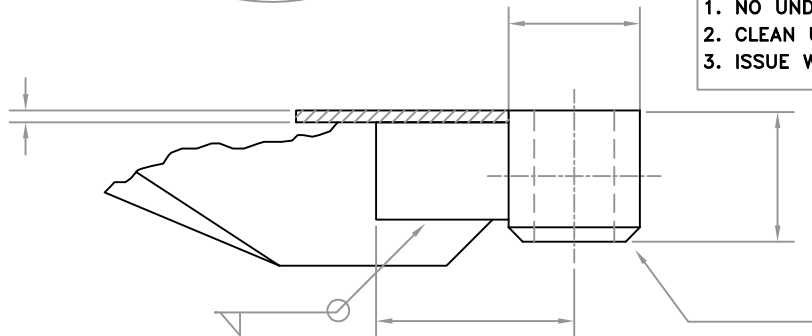


WELD EAR TO BOSS FIRST  
THEN WELD BLADE TO BOSS AND EAR



**NOTES**

1. NO UNDER-CUTTING OF ANY WELDS
2. CLEAN UP ALL EDGES AND CORNERS
3. ISSUE WELDERS QUALS. BEFORE FABRICATING



**DO NOT SCALE**

ALL EQUIPMENT, APPLICATION DATA, DESIGN CALCULATIONS, TECHNICAL MATERIAL AND RELATED INFORMATION ARE STRICTLY CONFIDENTIAL AND REMAINS THE PROPERTY OF FLUID MIXERS. DISCLOSURE THEREOF MAY NOT BE MADE WITHOUT THE WRITTEN PERMISSION OF FLUID MIXERS



TEL (011) 915 7873  
FAX (086) 513 5361  
INT'L CODE +2711

BOX 15334  
RIVERFIELD  
1564  
SOUTH AFRICA

www.fluidmixers.co.za

TITLE CBA-300 CURVED BLADE AEROFOIL

MATERIAL

No. OFF

DWG. No.

A B C D E F

DATE

BY

CHECKED